

Thank you for purchasing this Dynojet kit. This kit has been developed for a motorcycle which is set to the parameters listed at the right in the "Stage" description. If your motorcycle does not meet any of these parameters please check with Dynojet before installation. For technical assistance contact your Dynojet distributor or call Dynojet U.S.A. (800)-992-4993

2191 Mendenhall Dr. Suite 105
 North Las Vegas, NV 89031
 TEL: 702-399-1423
 FAX: 702-399-1431
 8am-5pm Pacific Time
 Monday through Friday

Website Address
<http://www.dynojet.com>

The manufacturer and seller make no warranties express or implied which extend beyond the description of the goods contained herein. Any description of this product is for the purpose of identifying it and shall not be deemed to create an express warranty.



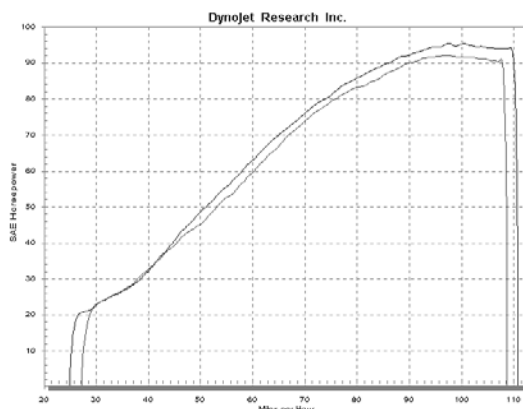
1166.001

U.S Models Only

1997-2003 Honda Valkyrie

Stage 1

For mildly tuned machines using the stock airbox, with stock or K&N filter. May also be used with a good aftermarket exhaust system
 K&N filter #HA-1596



This graph shows a typical gain with a Dynojet jet kit.

WARNING

**NO SMOKING!
 NO OPEN FLAME!
 WHILE INSTALLING
 YOUR DYNOJET KIT**

Parts List

6	Fuel Needles	DNO675
6	Adjusting Washers	DW0001
6	E-Clips	DE0001
6	Slide Springs	DSP007
1	Idle Adjustment Tool	DT008

STAGE ONE INSTRUCTIONS

1. Remove the vacuum slide from the carbs. Thread one of the slide cover screws into the center of the needle retainer (Fig. A) and pull up gently. Remove the stock needles & spacers, noting the order of assembly (Fig. B)
2. Install the Dynojet needles on groove #3, using all stock spacers (Fig. B). Install the Dynojet washers above the E-clip.
3. Install the Dynojet slide spring (DSP007) in place of the stock slide spring.
4. Locate the fuel mixture screw (Fig. C) Using the tool supplied, carefully turn mixture screw clockwise until seated, then back out 2-1/2 turns.

DYNOJET

1166.001

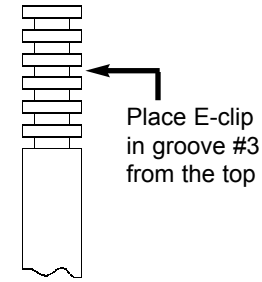


Fig. A

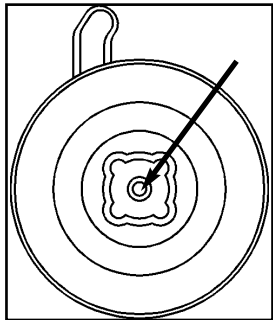


Fig. B

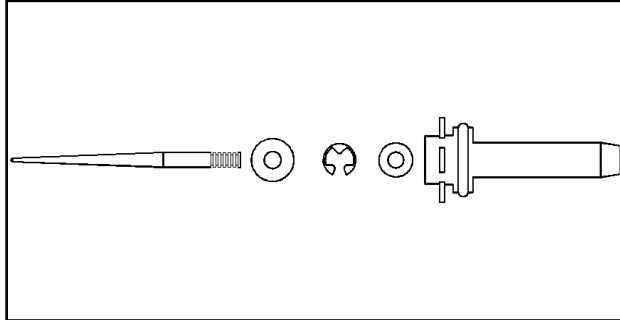


Fig. C

