

Thank you for purchasing this Dynojet kit. This kit has been developed for a motorcycle which is set to the parameters listed at the right in the "Stage" description. If your motorcycle does not meet any of these parameters please check with Dynojet before installation. For technical assistance contact your Dynojet distributor or call Dynojet U.S.A. (800)-992-4993

2191 Mendenhall Dr. Suite 105  
 North Las Vegas, NV 89031  
 TEL: 702-399-1423  
 FAX: 702-399-1431  
 8am-5pm Pacific Time  
 Monday through Friday

Website Address  
<http://www.dynojet.com>

The manufacturer and seller make no warranties express or implied which extend beyond the description of the goods contained herein. Any description of this product is for the purpose of identifying it and shall not be deemed to create an express warranty.



**2134.002**

U.S Models Only

1981-83 Kawasaki KZ1000

**Stage 1&3**

**STAGE 1**

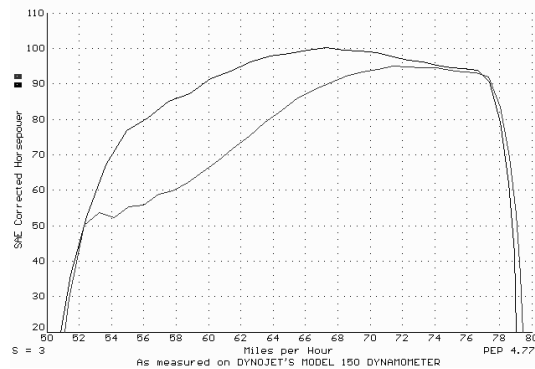
For mildly tuned machines using the stock airbox, with stock or K&N filter #KA-1600

**STAGE 3**

For mildly tuned machines using individual filters or velocity stacks. K&N filters #RC-0984

**Both stages may be used with a good aftermarket exhaust**

SPECIALS.002 - ZX1000R STOCK JETTING AFTERMARKET PIPE R0  
 SPECIALS.008 - ZX1000R JET KIT AFTERMARKET PIPE R0



*This graph shows a typical gain with a Dynojet jet kit.*

# WARNING

**NO SMOKING!  
 NO OPEN FLAME!  
 WHILE INSTALLING  
 YOUR JET KIT**

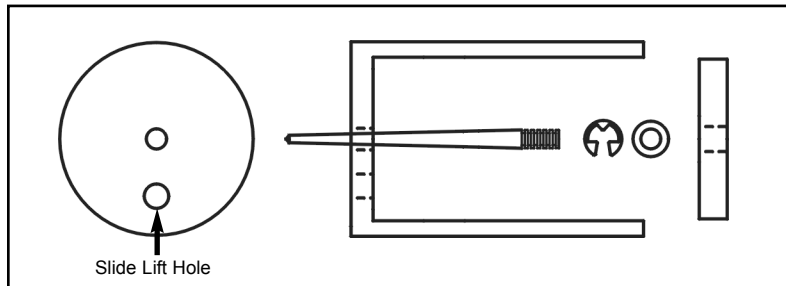
## Parts List

4	Main Jet	DJ122
4	Main Jet	DJ126
4	Main Jet	DJ134
4	Main Jet	DJ138
4	Fuel Needle	DNT406
8	Adjusting Washer	DW0001
4	E-clips	DE0001
1	Plug Drill	DD #5/32
1	Screw	DS0001
1	Slide Drill	DD #37
1	Main Air Jet Drill	DD #58

## STAGE ONE INSTRUCTIONS

1. Remove the vacuum slides from the carbs. Remove the stock needles and spacers, noting order of assembly (Fig.A).
2. Using the drill bit provided (DD #37) enlarge your slide lift holes (Fig. A). The picture may not show your slide exactly. Drill your existing slide lift holes only, **do not drill the needle hole or any new holes.**
3. Install the Dynojet needles on groove #2 from the top. Use all stock spacers (Fig. A). Install the small Dynojet washers above the e-clip (2 per needle). After installing the slides in the carbs be sure to check slide movement manually.
4. Remove the stock main jets and replace with the Dynojet main jets provided. If you are running the stock exhaust install the DJ122 main jets. If you are running an aftermarket exhaust or slip-ons with high flowing baffles use the DJ126 main jets. Be sure that the jet you are changing is the main jet.
5. Locate the main air jet (Fig. B). With the drill bit provided (DD #58) drill the main air jet. Use grease on the drill bit before drilling to keep shavings on the drill bit.
6. Locate the fuel mixture plug (Fig. C). If you see a screw head at Fig.C then proceed to the adjusting procedure. With the 5/32 drill bit provided carefully drill through the plug. **NOTE:** The mixture screw is directly underneath this plug, be ready to pull back on the drill the instant you break through. Use screw provided to secure and remove this plug. Carefully turn the mixture screw clockwise until lightly seated, then back out 2.5 turns.

Fig. A



## STAGE THREE INSTRUCTIONS

**DYNOJET**  
2134.002

1. Remove the vacuum slides from the carbs. Remove the stock needles and spacers, noting order of assembly (Fig.A).
2. Using the drill bit provided (DD #37) enlarge your slide lift holes (Fig. A). The picture may not show your slide exactly. Drill your existing slide lift holes only, **do not drill the needle hole or any new holes.**
3. Install the Dynojet needles on groove #2 from the top. Use all stock spacers (Fig. A). Install the small Dynojet washers above the e-clip (2 per needle). After installing the slides in the carbs be sure to check slide movement manually.
4. Remove the stock main jets and replace with the Dynojet main jets provided. If you are running the stock exhaust install the DJ134 main jets. If you are running an aftermarket exhaust or slip-ons with high flowing baffles use the DJ138 main jets. Be sure that the jet you are changing is the main jet.
5. Locate the main air jet (Fig. B). With the drill bit provided (DD #58) drill the main air jet. Use grease on the drill bit before drilling to keep shavings on the drill bit.
6. Locate the fuel mixture plug (Fig. C). If you see a screw head at Fig.C then proceed to the adjusting procedure. With the 5/32 drill bit provided carefully drill through the plug. **NOTE:** The mixture screw is directly underneath this plug, be ready to pull back on the drill the instant you break through. Use screw provided to secure and remove this plug. Carefully turn the mixture screw clockwise until lightly seated, then back out 2.5 turns.

Fig. B

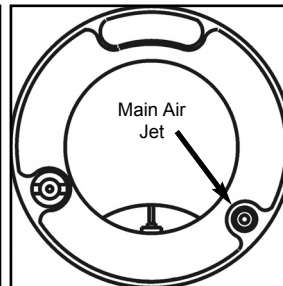


Fig. C

