

Thank you for purchasing this Dynojet kit. This kit has been developed for a motorcycle which is set to the parameters listed at the right in the "Stage" description. If your motorcycle does not meet any of these parameters please check with Dynojet before installation. For technical assistance contact your Dynojet distributor or call Dynojet U.S.A. (800)-992-4993

2191 Mendenhall Dr. Suite 105
 North Las Vegas, NV 89081
 TEL: 702-399-1423
 FAX: 702-399-1431
 8am-5pm Pacific Time
 Monday through Friday

Website Address
<http://www.dynojet.com>

The manufacturer and seller make no warranties express or implied which extend beyond the description of the goods contained herein. Any description of this product is for the purpose of identifying it and shall not be deemed to create an express warranty.



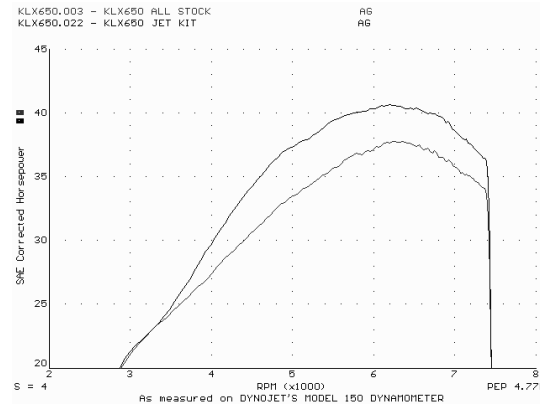
2250.001

U.S Models Only

1993-97 Kawasaki KLX650R

Stage 2

For mildly tuned machines using stock airbox, with lid removed with stock or K&N filter. May also be used with a good aftermarket exhaust system. K&N filter #KA-6589



This graph shows a typical gain with a Dynojet jet kit.

WARNING

**NO SMOKING!
 NO OPEN FLAME!
 WHILE INSTALLING
 YOUR DYNOJET KIT**

Parts List

1	Main Jet	DJ140
1	Main Jet	DJ144
1	Main Jet	DJ150
1	Fuel Needle	DNO234
2	Adjusting Washer	DW0001
1	E-clips	DE0001
1	Plug Drill	DD #5/32
1	Screw	DS0001

STAGE TWO INSTRUCTIONS

Dynojet

2250.001

1. Remove the vacuum slide from the carb. Remove the stock needle and spacers, noting the order of assembly (Fig.A).
2. Install the Dynojet needle on groove #3 from the top. Use all stock spacers (Fig.A). Install the small Dynojet washers above the E-clip. After installing the slide in the carb be sure to check slide movement manually.
3. Remove the stock main jet and replace with the Dynojet main jet provided. Use the DJ150 main jet at altitudes up to 3000 ft. Use the DJ144 main jet at altitudes above 3000 ft. Use the DJ140 main jet at altitudes above 6000 ft. Be sure that the jet you are changing is the main jet.
4. Locate the fuel mixture plug (Fig.B). If you see a screw head at Fig.B then proceed to the adjusting procedure. With the DD #5/32 drill bit provided carefully drill through the plug. **NOTE: The mixture screw is directly underneath this plug, be ready to pull back on the drill the instant you break through.** Use screw provided to secure and remove this plug. Carefully turn the mixture screw clockwise until lightly seated, then back out 3 turns.

NOTE: The airbox lid and/or snorkel must be removed for this kit to work properly

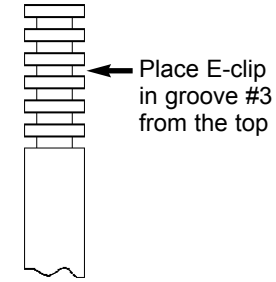


Fig. A

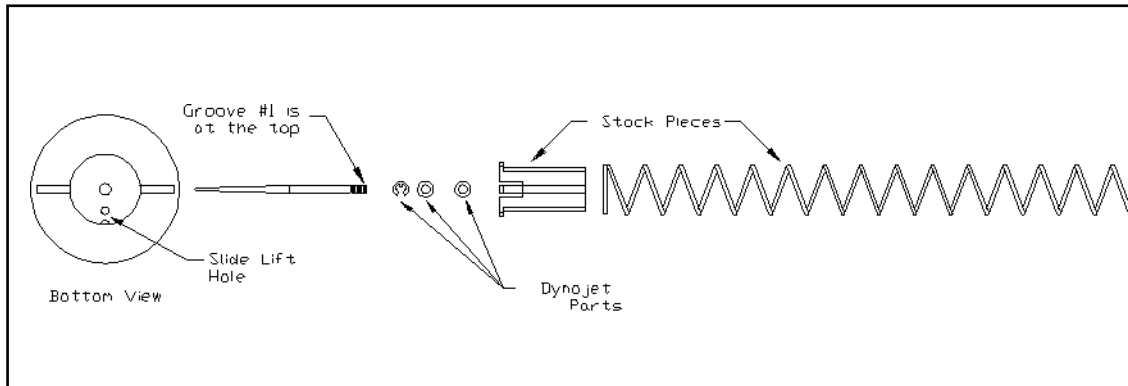


Fig. B

