

Thank you for purchasing this Dynojet kit. This kit has been developed for a motorcycle which is set to the parameters listed at the right in the "Stage" description. If your motorcycle does not meet any of these parameters please check with Dynojet before installation. For technical assistance contact your Dynojet distributor or call Dynojet U.S.A. (800)-992-4993

2191 Mendenhall Dr. Suite 105  
 North Las Vegas, NV 89031  
 TEL: 702-399-1423  
 FAX: 702-399-1431  
 8am-5pm Pacific Time  
 Monday through Friday

Website Address  
<http://www.dynojet.com>

The manufacturer and seller make no warranties express or implied which extend beyond the description of the goods contained herein. Any description of this product is for the purpose of identifying it and shall not be deemed to create an express warranty.

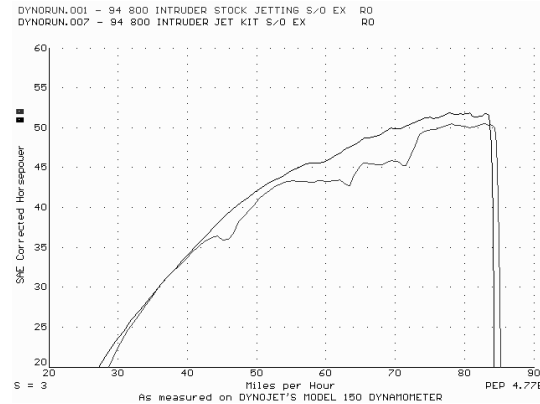


**3143.001**  
 U.S. Models Only

*1997-2004 Suzuki VZ800V Marauder*

**Stage 1**

For mildly tuned machines using the stock air-box, with stock airfilter. May also be used with a good aftermarket exhaust system.



*This graph shows a typical gain with a Dynojet jet kit.*

# WARNING

**NO SMOKING!  
 NO OPEN FLAME!  
 WHILE INSTALLING  
 YOUR DYNOJET KIT**

## Parts List

2	Fuel Needle	DNO361S
2	E-Clip	DE0001
2	Adjusting Washer	DW0001
1	Slide Drill	DD #32
1	Plug Drill	DD #5/32
1	Screw	DS0001

## STAGE ONE INSTRUCTIONS

**DYNOJET**

3143.001

**NOTE:** *It is not necessary to remove the carburetors to install this kit.*

1. Remove the vacuum slides from the carbs. **NOTE:** The front and rear slides are different, make sure to reinstall them in the proper carburetor. Remove the stock needles and spacers, noting order of assembly (Fig. A). Using the DD #32 drill bit provided, enlarge the slide lift hole. **Do not drill the needle hole.**
2. Use stock main jets.
3. Install the Dynojet needles on groove #4 if running below 3000ft. Install the needle on groove #3 if running above 3000ft. Use all stock spacers (Fig. A). Install the small Dynojet washers above the e-clip. After installing the slides in the carbs be sure to check slide movement manually.
4. Locate the fuel mixture plug (Fig. B). If you see a screw head at Fig. B proceed to adjusting procedure. With the 5/32 drill bit provided carefully drill through the plugs. **NOTE:** The mixture screw is directly underneath this plug, be ready to pull back on the drill the instant you break through. Use screw provided to secure and remove this plug. Carefully turn mixture screws clockwise until lightly seated, then back out 2.5 turns when using a slip-on exhaust or drag pipes with baffles. Adjust mixture screws to 3 turns out when using drag pipes without baffles.

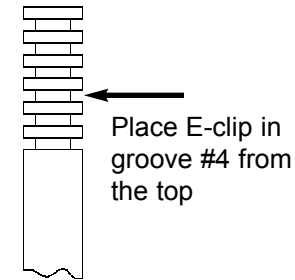


Fig. A

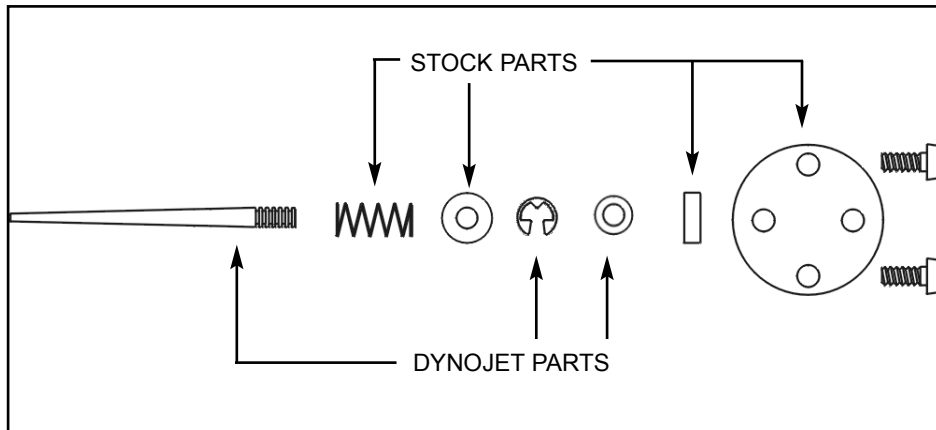


Fig. B

