

Thank you for purchasing this Dynojet kit. This kit has been developed for a motorcycle which is set to the parameters listed at the right in the "Stage" description. If your motorcycle does not meet any of these parameters please check with Dynojet before installation. For technical assistance contact your Dynojet distributor or call Dynojet U.S.A. (800)-992-4993

2191 Mendenhall Dr. Suite 105
 North Las Vegas, NV 89031
 TEL: 702-399-1423
 FAX: 702-399-1431
 8am-5pm Pacific Time
 Monday through Friday

Website Address
<http://www.dynojet.com>

The manufacturer and seller make no warranties express or implied which extend beyond the description of the goods contained herein. Any description of this product is for the purpose of identifying it and shall not be deemed to create an express warranty.

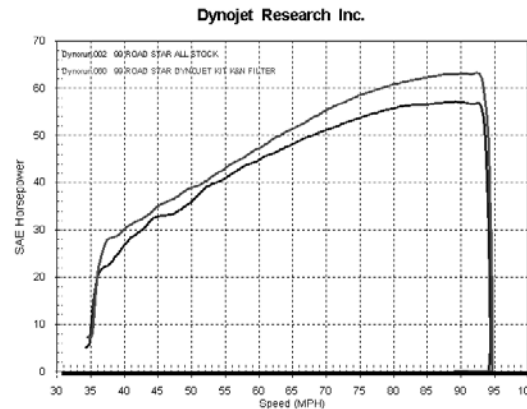


4175.002
 U.S Models Only

*1999-2003 Yamaha Road Star
 1600*

Stage 1 & 2

For mildly tuned machines using the stock airbox and stock air filter or K&N modified airbox and filter. May also be use with a good aftermarket exhaust. K&N filter #RK-3905



This graph shows a typical gain with a Dynojet jet kit.

WARNING

**NO SMOKING!
 NO OPEN FLAME!
 WHILE INSTALLING
 YOUR DYNOJET KIT**

Parts List

1	Main Jet	DJ160
1	Main Jet	DJ165
1	Main Jet	DJ190
1	Main Jet	DJ195
1	Fuel Needles	DNO977
1	E-Clips	DE0001
1	Adjusting Washers	DW0001
1	Plug	DJP001
1	Needle Spring	DSP77
1	Plug Drill	DD #5/32
1	Screw	DS0001

STAGE ONE INSTRUCTIONS

1. Remove the vacuum slide from the carb. Remove the stock needle and spacers, noting the order of assembly (Fig.A).
2. Install the Dynojet needle on groove #3 from the top. Use all stock spacers (Fig. A). The small Dynojet washer is for half step increments and does not have to be installed at this time. **NOTE:** The DSP77 spring does not have to be used, it is supplied in case the stock spring is misplaced. After installing the slide in the carb be sure to check slide movement manually before air box installation.
3. Remove the stock main jet and replace with the Dynojet main jet provided. If you are running the stock exhaust install the DJ160 main jet. If you are running an aftermarket exhaust or slip-ons with high flowing baffles use the DJ165 main jet. Be sure that the jet you are changing is the main jet.
4. Locate the fuel mixture plug (Fig. B). If you see a screw head at Fig.B then proceed to the adjusting procedure. With the DD #5/32 drill bit provided carefully drill through the plug. **NOTE:** The mixture screw is directly underneath this plug, be ready to pull back on the drill the instant you break through. Use screw provided to secure and remove this plug. Carefully turn the mixture screw clockwise until lightly seated, then back out 3-1/2 turns.
5. Locate the canister shown in Fig.C. Remove the 3 bolts that are shown in Fig.C in-order to move the canister aside. Remove the hose located on the back side in the center of the canister, move the canister out of the way enough to insert the plug DJP001 in the hose shown in Fig.D. Reinstall the canister.

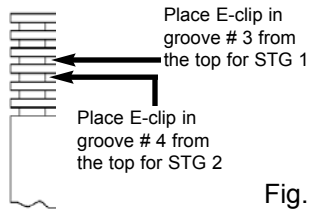
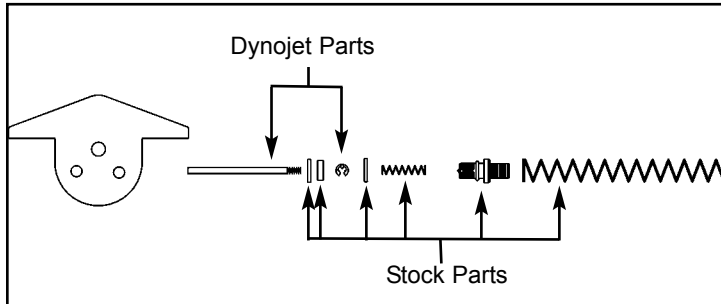


Fig. A



STAGE TWO INSTRUCTIONS

DYNOJET

4175.002

Note: Stage Two is only to be used with K&N filter kit #RK-3905

1. Remove the vacuum slide from the carb. Remove the stock needle and spacers, noting the order of assembly (Fig.A).
2. Install the Dynojet needle on groove #4 from the top. Use all stock spacers (Fig. A). The small Dynojet washer is for half step increments and does not have to be installed at this time. **NOTE:** The DSP77 spring does not have to be used, it is supplied in case the stock spring is misplaced. After installing the slide in the carb be sure to check slide movement manually before air box installation.
3. Remove the stock main jet and replace with the Dynojet main jet provided. If you are running the stock exhaust install the DJ190 main jet. If you are running an aftermarket exhaust or slip-on with high flowing baffle use the DJ195 main jet. Be sure that the jet you are changing is the main jet.
4. Locate the fuel mixture plug (Fig. B). If you see a screw head at Fig. B then proceed to the adjusting procedure. With the DD #5/32 drill bit provided carefully drill through the plug. **NOTE:** The mixture screw is directly underneath this plug, be ready to pull back on the drill the instant you break through. Use screw provided to secure and remove this plug. Carefully turn the mixture screw clockwise until lightly seated, then back out 3 -1/2 turns.
5. Locate the canister shown in Fig.C. Remove the 3 bolts that are shown in Fig.C in-order to move the canister aside. Remove the hose located on the back side in the center of the canister, move the canister out of the way enough to insert the plug DJP001 in the hose shown in Fig.D. Reinstall the canister.

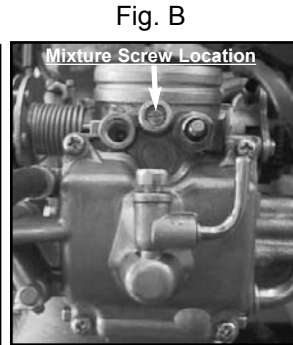


Fig. B

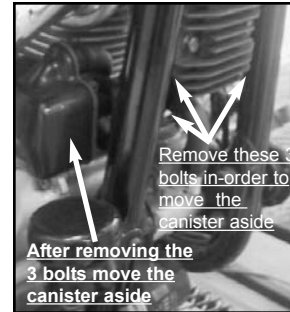


Fig. C

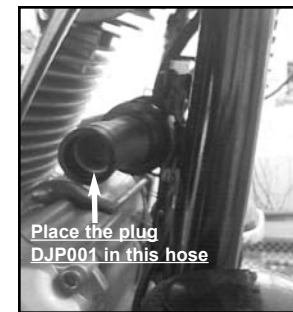


Fig. D