

Thank you for purchasing this Dynojet kit. This kit has been developed for a motorcycle which is set to the parameters listed at the right in the “Stage” description. If your motorcycle does not meet any of these parameters please check with Dynojet before installation. For technical assistance contact your Dynojet distributor or call Dynojet U.S.A. (800)-992-4993

2191 Mendenhall Dr. Suite 105
North Las Vegas, NV 89081
TEL: 702-399-1423
FAX: 702-399-1431
8am-5pm Pacific Time
Monday through Friday

Website Address
<http://www.dynojet.com>

The manufacturer and seller make no warranties express or implied which extend beyond the description of the goods contained herein. Any description of this product is for the purpose of identifying it and shall not be deemed to create an express warranty.



4176.001

U.S Models Only

2004-2007 Yamaha Road Star 1700

Stage 1 & 2

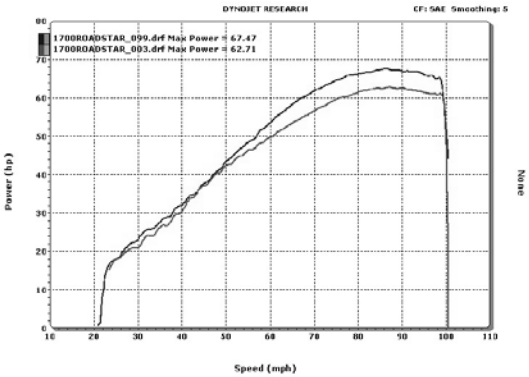
STAGE 1

For mildly tuned machines using the stock airbox, with stock or K&N filter.

STAGE 2

For mildly tuned machines using a modified or aftermarket airbox, with the stock or K&N filter.

Both stages can be used with the stock exhaust or a good aftermarket exhaust.



This graph shows a typical gain with a Dynojet jet kit.

WARNING

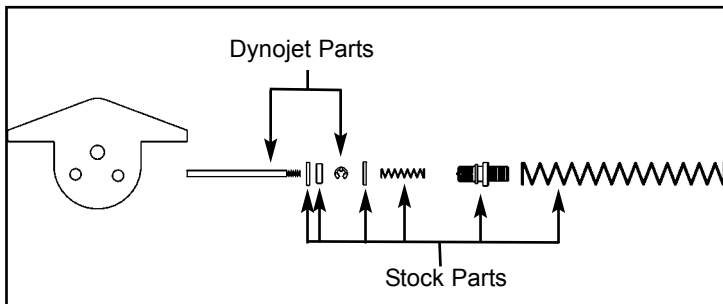
**NO SMOKING!
NO OPEN FLAME!
WHILE INSTALLING
YOUR DYNOJET KIT**

Parts List		
1	Main Jet	DJ165
1	Main Jet	DJ170
1	Main Jet	DJ175
1	Main Jet	DJ190
1	Main Jet	DJ195
1	Main Jet	DJ200
1	Main Jet	DJ210
1	Fuel Needle	DNO977
1	Pilot Jet	DPJM037
1	E-clips	DE0001
1	Adjusting Washer	DW0001
1	Needle Spring	DSP77
1	Plug	DJP001
1	Plug Drill	DD 5/32
1	Screw	DS0001

STAGE ONE INSTRUCTIONS

1. Remove the vacuum slide from the carb. Remove the stock needle and spacers, noting the order of assembly (Fig.A).
2. Install the Dynojet needle on groove #4 from the top. Use all stock spacers (Fig. A). The small Dynojet washer is for half step increments and does not have to be installed at this time. **NOTE: The DSP77 spring does not have to be used, it is supplied in case the stock spring is misplaced.** After installing the slide in the carb, be sure to check slide movement manually before airbox installation.
3. Remove the float bowl from the bottom of the carb and locate the main jet. Remove the stock main jet and replace with the Dynojet main jet provided. If you are running the stock exhaust, install the DJ170 main jet. If you are running an aftermarket exhaust or slip-ons with high flowing baffles, use the DJ175 main jet. Be sure that the jet you are changing is the main jet.
4. With the float bowl removed, locate the stock pilot jet and replace with the Dynojet pilot jet provided (DPJM037). Reinstall the float bowl.
5. Locate the fuel mixture plug (Fig. B). If you see a screw head at Fig.B, then proceed to the adjusting procedure. With the DD 5/32 drill bit provided carefully drill through the plug. **NOTE: The mixture screw is directly underneath this plug, be ready to pull back on the drill the instant you break through.** Use screw provided to secure and remove this plug. Carefully turn the mixture screw clockwise until lightly seated, then back out 3 turns.
6. Locate the canister shown in Fig.C. Remove the 3 bolts that are shown in Fig.C in-order to move the canister aside. Remove the hose located on the back side in the center of the canister and move the canister out of the way enough to insert the plug provided (DJP001) in the hose shown in Fig.D. Reinstall the canister.

Fig. A



STAGE TWO INSTRUCTIONS

For use with a modified or aftermarket airbox.

Dynojet

4176.001

1. Remove the vacuum slide from the carb. Remove the stock needle and spacers, noting the order of assembly (Fig.A).
2. Install the Dynojet needle on groove #4 from the top. Use all stock spacers (Fig. A). The small Dynojet washer is for half step increments and does not have to be installed at this time. **NOTE: The DSP77 spring does not have to be used, it is supplied in case the stock spring is misplaced.** After installing the slide in the carb, be sure to check slide movement manually before airbox installation.
3. Remove the float bowl from the bottom of the carb and locate the main jet. Remove the stock main jet and replace with the Dynojet main jet provided. If you are running the stock exhaust, install the DJ195 main jet. If you are running an aftermarket exhaust or slip-ons with high flowing baffles, use the DJ200 main jet. Be sure that the jet you are changing is the main jet.
4. With the float bowl removed, locate the stock pilot jet and replace with the Dynojet pilot jet provided (DPJM037). Reinstall the float bowl.
5. Locate the fuel mixture plug (Fig. B). If you see a screw head at Fig. B, then proceed to the adjusting procedure. With the DD 5/32 drill bit provided carefully drill through the plug. **NOTE: The mixture screw is directly underneath this plug, be ready to pull back on the drill the instant you break through.** Use screw provided to secure and remove this plug. Carefully turn the mixture screw clockwise until lightly seated, then back out 3 turns.
6. Locate the canister shown in Fig.C. Remove the 3 bolts that are shown in Fig.C in-order to move the canister aside. Remove the hose located on the back side in the center of the canister, move the canister out of the way enough to insert the plug provided (DJP001) in the hose shown in Fig.D. Reinstall the canister.

Fig. B



Fig. C

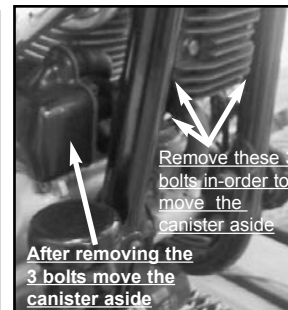


Fig. D

