

# Q412.001

## 2000-2005 Yamaha

### 400 Kodiak Automatic

#### Stage 1

For mildly tuned machines using the stock airbox with stock or aftermarket filter. May also be used with a good aftermarket exhaust system.

<b><i>Parts List</i></b>		
1	Main Jet	DJ120
1	Main Jet	DJ122
1	Main Jet	DJ124
1	Main Jet	DJ126
1	Main Jet	DJ128
1	Main Jet	DJ130
1	Main Jet	DJ132
1	Main Jet	DJ134
1	Fuel Needle	DNO490
1	Needle Spring	DSP77
1	Adjusting Washer	DW0001
1	E-Clip	DE0001

## STAGE ONE INSTRUCTIONS

1. Remove the vacuum slide from the carb. Remove the stock needle & spacers, noting order of assembly (Fig.A).

2. Install the Dynojet needle on groove #5 for applications below 3000 feet, groove #4 for above 6000 feet, using all stock spacers. **NOTE:** The DSP77 spring does not have to be installed at this time. It is supplied in case the stock spring is misplaced.

3. Remove the stock main jet and replace with the Dynojet main jet provided. If you are running the stock exhaust, use the DJ128 below 3000 feet, DJ124 from 3000 to 6000 feet and DJ120 above 6000 feet. If you are using an aftermarket exhaust with a quiet core baffle, use the DJ130 below 3000 feet, DJ126 from 3000 to 6000 feet and DJ122 above 6000 feet. If you are running an aftermarket exhaust with a high flow baffle, use the DJ132 below 3000 feet, DJ128 from 3000 to 6000 feet and the DJ124 above 6000 feet.

4. Locate the Fuel Mixture Screw (Fig. B). Using a flat blade screwdriver, turn the mixture screw clockwise until it seats, then turn out 2 turns if below 3000 feet or 1 1/2 turns when above 6000 feet.

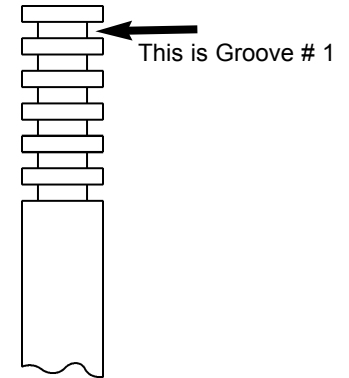


Fig.A

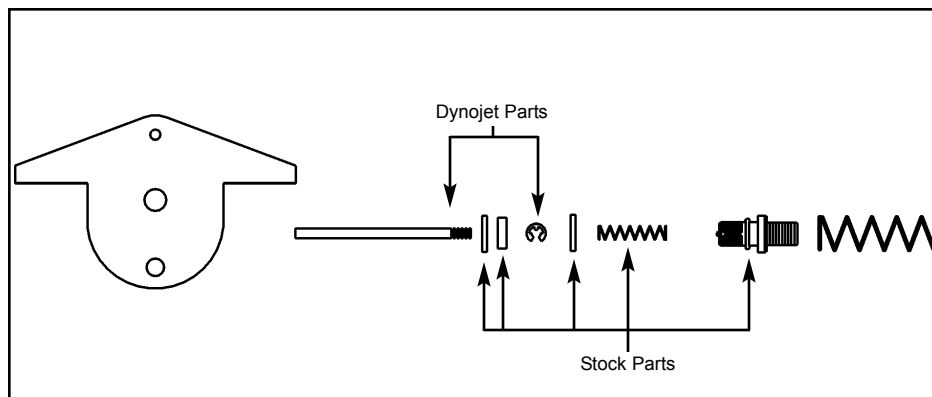
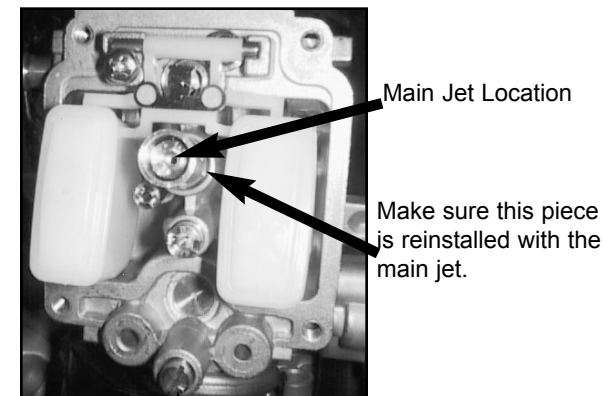


Fig.B



Mixture Screw