

Q432.001
2007-2012 Yamaha
400 Big Bear IRS
Stage 1

For mildly tuned machines using the stock airbox with stock or aftermarket filter. May also be used with a good aftermarket exhaust system.

<i>Parts List</i>		
1	Main Jet	DJ104
1	Main Jet	DJ106
1	Main Jet	DJ108
1	Main Jet	DJ110
1	Main Jet	DJ112
1	Main Jet	DJ114
1	Main Jet	DJ116
1	Fuel Needle	DNO490
1	Needle Spring	DSP77
1	Adjusting Washer	DW0001
1	E-Clip	DE0001

STAGE ONE INSTRUCTIONS

1. Remove the vacuum slide from the carb. Remove the stock needle & spacers, noting order of assembly (Fig.A).

2. Install the Dynojet needle on groove #3 for applications below 3000 feet, groove #2 for above 3000 feet, using all stock spacers. **NOTE:** The DSP77 spring does not have to be installed at this time. It is supplied in case the stock spring is misplaced.

3. Remove the stock main jet and replace with the Dynojet main jet provided. If you are running the stock exhaust, use the DJ110 below 3000 feet, DJ108 from 3000 to 6000 feet and DJ106 above 6000 feet. If you are using an aftermarket exhaust with a quiet core baffle, use the DJ112 below 3000 feet, DJ110 from 3000 to 6000 feet and DJ108 above 6000 feet. If you are running an aftermarket exhaust with a high flow baffle, use the DJ114 below 3000 feet, DJ112 from 3000 to 6000 feet and the DJ110 above 6000 feet.

4. Locate the Fuel Mixture Screw (Fig. B). Using a flat blade screwdriver, turn the mixture screw clockwise until it seats, then turn out 3 turns if below 3000 feet or 2 1/2 turns when above 3000 feet.

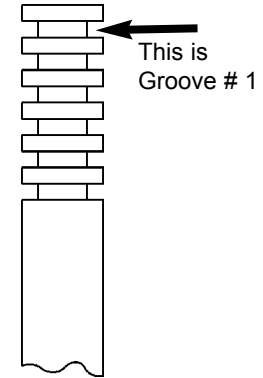


Fig.A

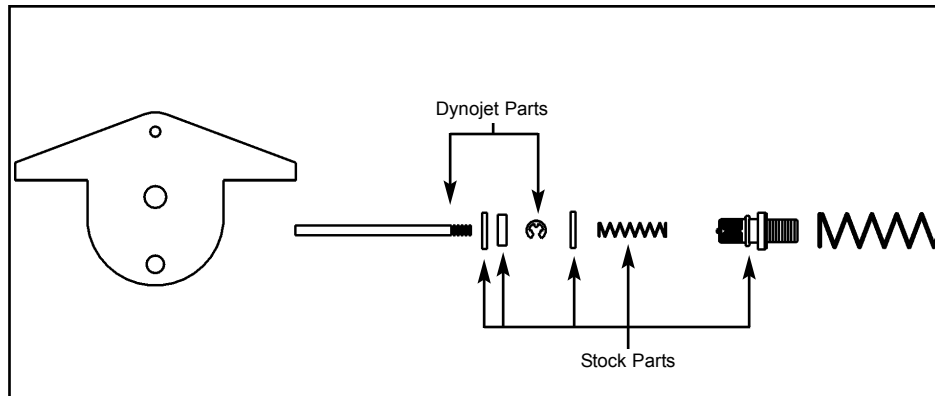
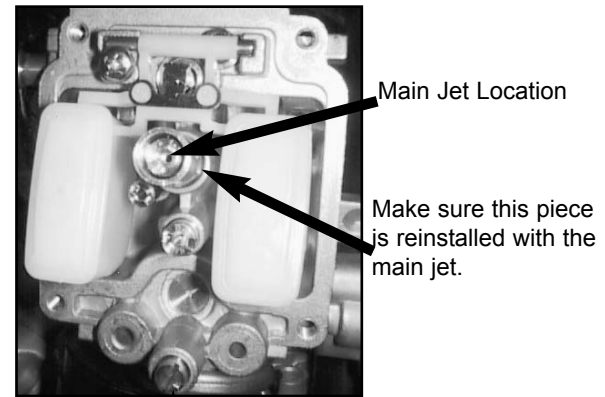


Fig.B



Mixture Screw