

Thank you for purchasing this Dynojet kit. This kit has been developed for a motorcycle which is set to the parameters listed at the right in the "Stage" description. If your motorcycle does not meet any of these parameters please check with Dynojet before installation. For technical assistance contact your Dynojet distributor or call Dynojet U.S.A. (800)-992-4993



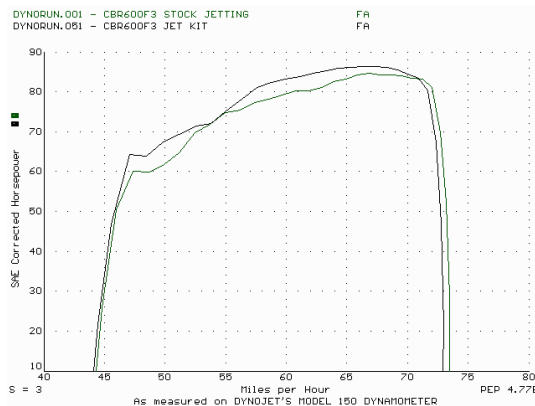
1189.001

U.S Models Only

1997-98 Honda CBR600F3

Stage 1

For mildly tuned machines using the stock airbox, with stock or K&N filter. May also be used with a good aftermarket exhaust system
K&N filter #HA-6095



This graph shows a typical gain with a Dynojet jet kit.

WARNING

**NO SMOKING!
NO OPEN FLAME!
WHILE INSTALLING
YOUR DYNOJET KIT**

2191 Mendenhall Dr. Suite 105
North Las Vegas, NV 89031
TEL: 702-399-1423
FAX: 702-399-1431
8am-5pm Pacific Time
Monday through Friday

Website Address
<http://www.dynojet.com>

The manufacturer and seller make no warranties express or implied which extend beyond the description of the goods contained herein. Any description of this product is for the purpose of identifying it and shall not be deemed to create an express warranty.

Parts List

2	Main Jet	DJ132
2	Main Jet	DJ134
2	Main Jet	DJ136
2	Main Jet	DJ138
2	Main Jet	DJ140
2	Main Jet	DJ142
4	Fuel Needle	DNO307
1	Slide Drill	DD #32
2	Decel Circuit Plugs	DCO400
4	Adjusting Washers	DW0001
4	E-Clips	DE0001
4	Slide Springs	DSP008
1	Idle Adjustment Tool	DT009
1	Insert	DI1757

STAGE ONE INSTRUCTIONS

1. Remove the carb tops and the slide springs. Remove the slide retainers by threading one of the slide cover screws into the center of the needle retainer (Fig. A) and pull up gently. Remove the stock needles and spacers, noting the order of assembly (Fig. C).
2. Drill the slide lift holes with the slide drill (DD #32) provided (Fig. B). **Do not** drill the needle hole.
3. Install the Dynojet needles on groove #3 from the top. Use all stock spacers (Fig. C). Install the small Dynojet washers above the E-clip. Install the stock needle retainers with the Dynojet springs (DSP008). After installing the slides in the carbs be sure to check slide movement manually before air box installation.
4. Remove the stock main jets and replace with Dynojet main jets provided. If you are running the stock exhaust install the DJ132 main jets in the outside carburetors (1&4) and the DJ134 main jets in the inside carburetors (2&3). If you are running an aftermarket exhaust or slip-on with a high flowing baffle, use the DJ136 main jets in the outside two carburetors (1&4) and the DJ138 main jets in the inside carburetors (2&3). When using a K&N filter with the stock exhaust use the DJ136 main jets and the DJ138 main jets accordingly. When using a K&N filter with an aftermarket exhaust or slip-on with a high flow baffle use the DJ140 main jets and the DJ142 main jets accordingly.
5. Install the deceleration circuit plugs (DCO400) in the small hoses shown (Fig. D). **Note:** There is a hose on each outside carburetor (1&4).
6. Locate the fuel mixture tab (Fig. E). Using the tool supplied (DT009), carefully turn the tabs clockwise until they lightly seat and then back out 1/2 turn. **NOTE: If you experience a stumble accelerating after hard deceleration from high speed when racing, it is not uncommon to turn the mixture screws all the way in. Follow instructions on insert DI1757 when using motorcycle for road race applications.**

DYNOJET

1189.001

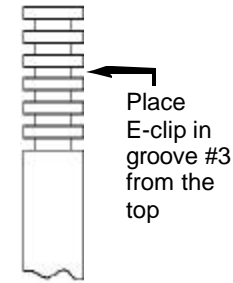


Fig. A

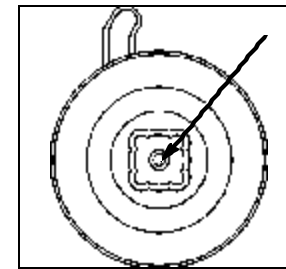


Fig. E

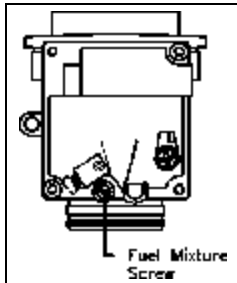


Fig. D

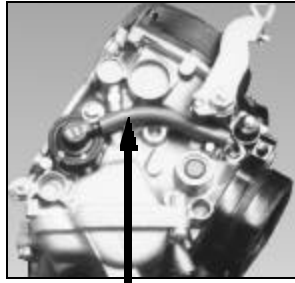


Fig. C

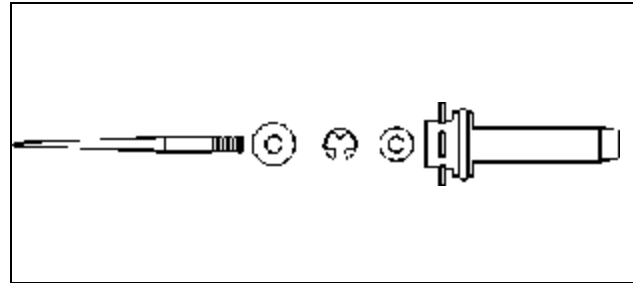


Fig. B

